

AzAtoZmedia

212.260.0237

Template questions?  
Please email: [art@atozmedia.com](mailto:art@atozmedia.com)

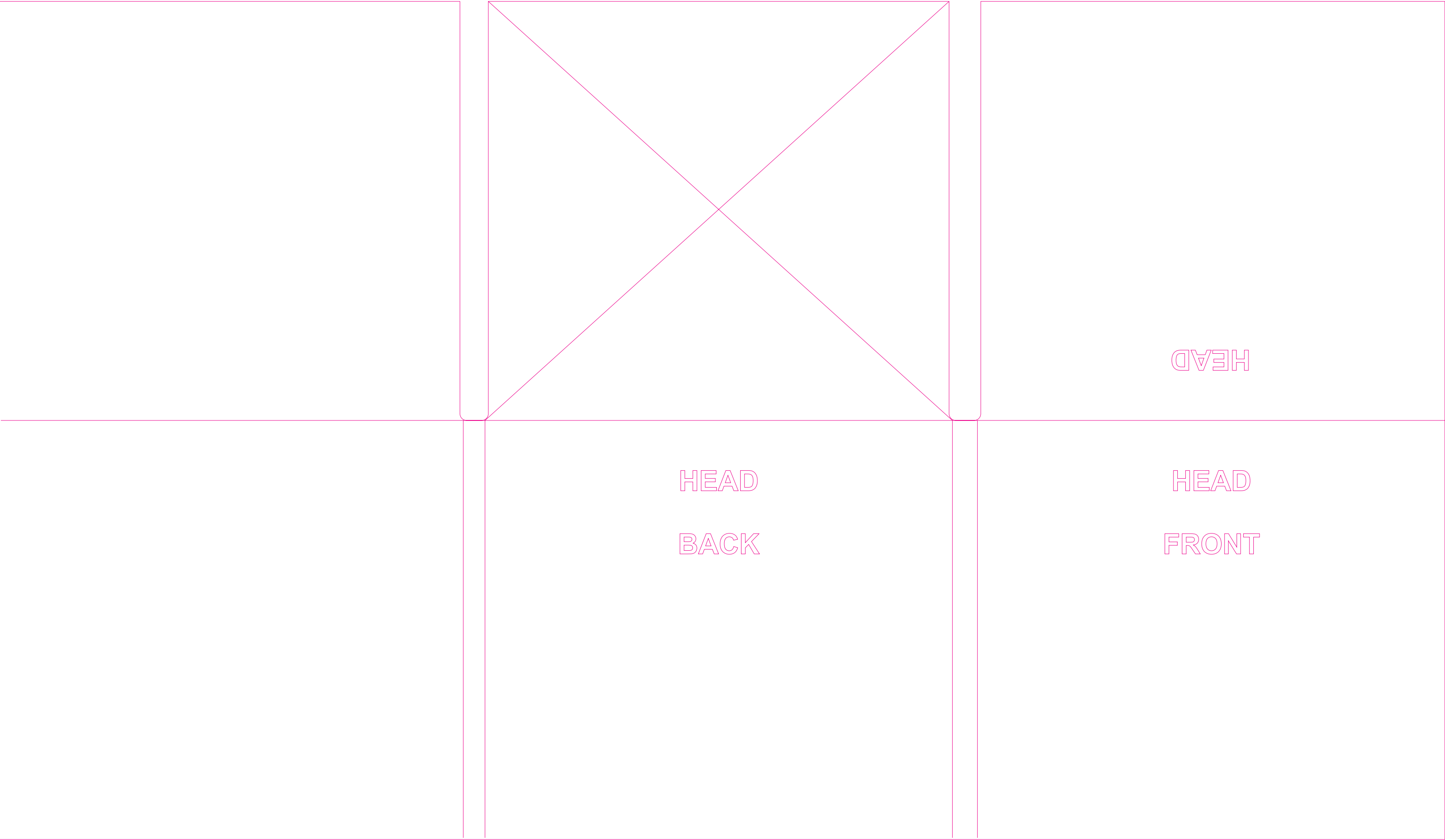
CUT LINE

ART MUST EXTEND PAST THIS LINE  
TO AVOID BLANK, UNPRINTED EDGES

FOLD LINE

PRINT WILL FOLD AT DOTTED  
GREEN LINES

PLEASE NOTE: IMAGES USED IN THIS  
LAYOUT NEED TO BE CMYK TIF FILES  
AT A RESOLUTION OF 300DPI.



Please note this is a die-cut template. Please add 3 mm bleed at all sides. Text and logos should not be closer than 3 mm to the die-lines.